

Lanzas contraincendios, de alto rendimiento con selección de caudal

- Caudal constante en todos los efectos y caudales.
- Anillo para la selección manual entre 4 caudales, sin variar el efecto.
- Fabricada en material E-LITE, ligero y resistente.
- Diseñada para trabajar con inyector de espuma, puede montar el tubo expansor de espuma CEP.
- Sistema de limpieza sin cambio de efecto o necesidad de cortar el flujo de agua.
- Válvula con palanca de polímero antichoque, disponible en 6 colores.

VIPER SG-1560. 50-125-200-230 lpm

LANZA :
Rosca giratoria fija 1" BSP
Peso: 1.560 gr.
Longitud: 20 cm.

BOQUILLA:
Rosca giratoria 1-1/2" BSP
Peso: 880 gr.
Longitud: 15 cm.



VIPER SG-3012 115-230-360-475 lpm

LANZA :
Rosca giratoria 1-1/2" BSP
Peso : 1.940 gr.
Longitud : 22,5 cm.

BOQUILLA:
Rosca giratoria 1-1/2" BSP
Peso: 1.255 gr.
Longitud: 15,5 cm.



NOTA:
Los pesos y dimensiones de las boquillas, incluyen los accesorios necesarios para el montaje de lanzas "break away".

VIPER SG-7515 265 - 380 - 500 - 600 lpm

LANZA :
Rosca giratoria 1-1/2" BSP
Peso: 1.940 gr.
Longitud; 22,5 cm.

BOQUILLA :
Rosca giratoria 1-1/2" BSP
Peso: 1.255 gr.
Londitud: 15,5 cm.

VIPER SG-9520/1-1/2" 350 - 500 - 600 - 800 lpm

LANZA :
Rosca giratoria 1-1/2" BSP
Peso: 1.940 gr.
Longitud; 22,5 cm.

BOQUILLA :
Rosca giratoria 1-1/2" BSP
Peso: 1.255 gr.
Londitud: 15,5 cm.



VIPER SG-12250 / 2-1/2" 500 - 600 - 800 - 1000 lpm

LANZA :
Rosca giratoria 2-1/2" BSP
Peso: 3.330 gr.
Longitud: 32,5 cm.

BOQUILLA :
Rosca giratoria 1-1/2" BSP
Peso: 1.720 gr.
Longitud: 22 cm.



Las boquillas de las lanzas VIPER SG, están disponibles en versión de 3 caudales + CIERRE en la boquilla, para el montaje de las lanzas "break away"

TABLA DE CAUDALES

Modelo	Presión en lanza		Caudal lanzas		Efecto	Alcance efectivo	
	psi	bar	gpm	lpm		feet	metros
SG - 1560	75	5	13	43	Chorro	59	18
			26	108	Chorro	82	25
			43	173	Chorro	92	28
			52	199	Chorro	102	31
	100	7	15	50	Chorro	62	19
			30	125	Chorro	85	26
			50	200	Chorro	98	30
			60	230	Chorro	108	33
	125	8,5	17	56	Chorro	69	21
			34	140	Chorro	98	30
			56	224	Chorro	105	32
			67	257	Chorro	108	33
SG - 3012	75	5	26	100	Chorro	75	23
			52	199	Chorro	105	32
			82	312	Chorro	125	38
			108	411	Chorro	131	40
	100	7	30	115	Chorro	85	26
			60	230	Chorro	112	34
			95	360	Chorro	131	40
			125	475	Chorro	141	43
	125	8,5	34	129	Chorro	92	28
			67	257	Chorro	118	36
			106	402	Chorro	138	42
			140	531	Chorro	148	45
SG - 7515	75	5	65	229	Chorro	112	34
			87	329	Chorro	121	37
			108	433	Chorro	135	41
			130	520	Chorro	138	42
	100	7	75	265	Chorro	118	36
			100	380	Chorro	138	42
			125	500	Chorro	144	44
			150	600	Chorro	148	45
	125	8,5	84	296	Chorro	125	38
			112	425	Chorro	141	43
			140	559	Chorro	151	46
			168	671	Chorro	157	48
SG-9520	75	5	82	303	Chorro	121	37
			108	433	Chorro	131	40
			130	520	Chorro	141	43
			173	693	Chorro	144	44
	100	7	95	350	Chorro	128	39
			125	500	Chorro	141	43
			150	600	Chorro	148	45
			200	800	Chorro	154	47
	125	8,5	106	391	Chorro	128	39
			140	559	Chorro	141	43
			168	671	Chorro	144	44
			224	894	Chorro	161	49
SG - 12250	75	5	94	375	SS	94	38
			113	450	SS	113	41
			150	600	SS	150	44
			188	750	SS	188	45
	100	7	125	500	SS	125	40
			150	600	SS	150	44
			200	800	SS	200	46
			250	1000	SS	250	48
	125	8,5	140	559	SS	140	41
			168	671	SS	168	44
			224	894	SS	224	47
			280	1118	SS	280	50

Viper Select Gallonage (SG) Series

Select Gallonage: Four settings @ 100 PSI & Flush

Swivel NST or NPSH except on 2 1/2"

**Weights: 3.4lbs(1560), 4.3lbs(3012/7515), 6.5lbs(9520)
7.3lbs(9520-2 1/2"/12250)**

**Lengths: 7.87"(1560), 8.85"(3012/7515), 11.2"(9520),
12.8"9520-2 1/2"/12250)**

Made of extruded E-Lite alloy & Hard anodized

All Viper models are individually tested

(Low Pressure also available on most models)

SG9520



SG1560



SG9520-2 1/2"



SG3012



SG12250



SG7515



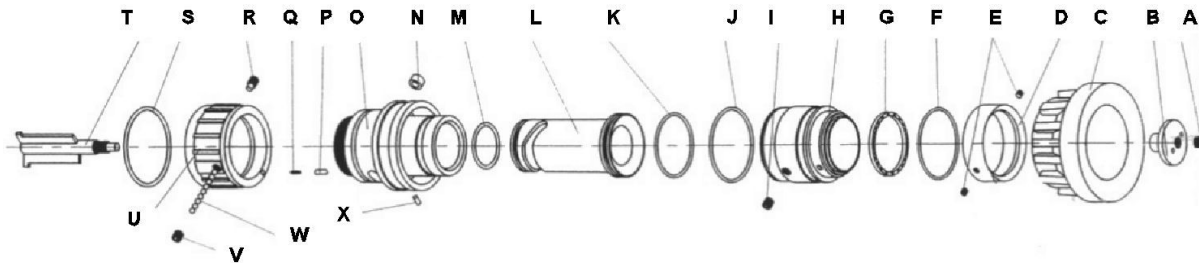
MODEL	NOZZLE PRESSURE (psi)	NOZZLE FLOW (gpm)	STREAM SETTING	EFFECTIVE REACH
SG1560	75	13	SS	59
		26	SS	82
		43	SS	92
		52	SS	102
	100	15	SS	62
		30	SS	85
		50	SS	98
		60	SS	108
	125	17	SS	69
		34	SS	98
		56	SS	105
		67	SS	108
SG3012	75	26	SS	75
		52	SS	105
		82	SS	125
		108	SS	131
	100	30	SS	85
		60	SS	112
		95	SS	131
		125	SS	141
	125	34	SS	92
		67	SS	118
		106	SS	138
		140	SS	148
SG7515	75	65	SS	112
		87	SS	121
		108	SS	135
		130	SS	138
	100	75	SS	118
		100	SS	138
		125	SS	114
		150	SS	148
	125	84	SS	125
		112	SS	141
		140	SS	151
		168	SS	157
SG9520	75	82	SS	121
		108	SS	131
		130	SS	141
		173	SS	144
	100	95	SS	128
		125	SS	141
		150	SS	148
		200	SS	154
	125	106	SS	128
		140	SS	141
		168	SS	144
		224	SS	161
SG12250	75	94	SS	125
		113	SS	135
		150	SS	144
		188	SS	148
	100	125	SS	131
		150	SS	144
		200	SS	151
		250	SS	157
	125	140	SS	135
		168	SS	144
		224	SS	154
		280	SS	164

VIPER SG3012/7515



SG3012 AND SG7515 TIP BOM			
REFERENCE	PART NAME	PART #	QUANTITY
A	SPINDLE SET PIN	V-SETPIN-3012	1
B	SPINDLE HEAD	V-SPNDLHD-3012	1
C	BUMPER	V- BUMPER-3012	1
D	RETAINER RING	V-RTNRRNG-3012	1
E	RET. RING SET PIN	V-SETPIN-RR-3012	2
F	RET. RING O-RING	V-ORING-RR-3012	1
G	SPINNING TEETH	V-TEETH-3012	1
H	OUTER BARREL	V-OUTRBARRL-3012	1
I	OUTER BARREL SET PIN	V-SETPIN-OB-3012	1
J	OUTER BARREL O-RING	V-ORING-OB-3012	1
K	INNER BARREL O-RING 1	V-ORING-IBL-3012	1
L	INNER BARREL	V-INNERBARREL-3012	1
M	INNER BARREL O-RING 2	V-ORING-IBS-3012	1
N	BUSHING	V-BSHING-3012	1
O	NOZZLE BARREL	V-NZLBARREL-3012	1
P	CLICK CYLINDER	V-CLKCYL-3012	1
Q	CLICK SPRING	V-CLKSPRING-3012	1
R	SELECTOR SET PIN	V-SETPIN-SLCT-3012	1
S	NOZZLE BARREL O-RING	V-ORING-3012	1
T	SPINDLE SHAFT	V-SPNDLSHFT-3012	1
U	FLOW REGULATOR	V-FLOWREG-3012	1
V	BEARING SET PIN	V-SETPIN-3012	1
W	BALL BEARINGS	V-BEARINGS-3012	1
X	FLOW REG. GUIDE	V-FLREGGUIDE-3012	32

SG3012/7515 TIP



(VALVE PORTION) VB1560 and VB3012 BOM			
REFERENCE	PART NAME	PART #	QUANTITY
1	1" GASKET	GASKET_1	1
1a	1.5" GASKET	GASKET_15	1
2	1" SWIVEL	V-1" SWIVEL	1
2a	1.5" SWIVEL	V-1.5" SWIVEL	1
3	SWIVEL O-RING	V-ORING-SW-3012	1
4	BALL	V-BALL-3012	1
5	PISTOL GRIP	V-PG15V	1
6	BALL LOCATOR (2 PIECES)	V-BALLOCC-3012	1
7			
8	PISTOL GRIP SET PIN	V-SETPIN-3012	1
9	VALVE BODY	VLVBDY-3012	1
10	SEAT RETAINER (3 PIECES)	V-SEATRTNR-3012	1
11			
12			
13	BALL ACUATOR (2 PEICES)	V-BALLACT-3012	1
14			
15	PAN HEAD COVER	V-PANHEAD-3012	1
16	SWIVEL SET PIN	V-SETPIN-3012	1
17	BALL BEARINGS	V-BEARINGS-3012	32
18	HANDLE (BAIL)	V-HANDLE-3012	1

SHUTOFF USE:

- Open and close the valve slowly to reduce risk of water hammer.
- Pull the bail handle toward the swivel to OPEN the valve.
- Push the bail handle toward the tip of the nozzle to CLOSE the valve.

TIP USE:

- The Gallonage selector ring indicates the flow in gallons per minute at 100 psi.
- Flush setting is made to discharge obstructions from the nozzle while flowing water.
- Rotate the rubber bumper on the end to select spray pattern.

SG3012 AVAILABLE KITS		
KIT#	KIT Name	PARTS CONTAINED
VNRK-3012	VIPER NOZZLE REPAIR KIT SG3012 OR SG7515	A,B,C,D,E,F,G,I,J,K,M,N,P,Q,R,S,V,W,X 1a,3,4,5,6,7,8,10,11,12,13,14,15,16,17,18
VVRK-3012	Valve Repair Kit Small	1,1a,3,4,6,7,10,11,12,13,14,15,16,17,18
VBSC-3012	Ball & Seat Combo Small	4,10,11,12
V-HH5-3012	Handle Hardware Small	6,7,13,14,15
V-SWKIT1560	Swivel Kit 1" Small	1,3,16,17
V-SWKIT3012	Swivel Kit 1.5" Small	1a,3,16,17

Maintenance:

- Test nozzle before putting into service.
- Clean nozzle by flushing with water after use.
- Use non-detergent soap to clean dirt from the exterior to reduce wear .
- Regularly check the bail handle screws that they are tight. If taken out use medium thread locker on the threads before reassembly.
- Periodically service your nozzle or have your fire equipment dealer service it.
- Normally serviced parts are the: Ball, Seat assembly, Spinning teeth, and the handle hardware (Ball locator screw, Actuator, Pan head cover).

DANGER

**PLEASE BE RESPONSIBLE!
PLEASE BE CAREFUL!**

THE USER OF THIS EQUIPMENT IS PERSONALLY RESPONSIBLE FOR THE FOLLOWING:

1. You need to know and understand that Fire-fighting and Emergency response is dangerous and proper training is needed.
2. You need to be physically fit and skillful in the use of any equipment that you may need to use.
3. You need to know that your equipment is in proper working order.
4. You need to know carelessness or negligence may result in injury or death.

**PLEASE BE RESPONSIBLE!
PLEASE BE CAREFUL!**

